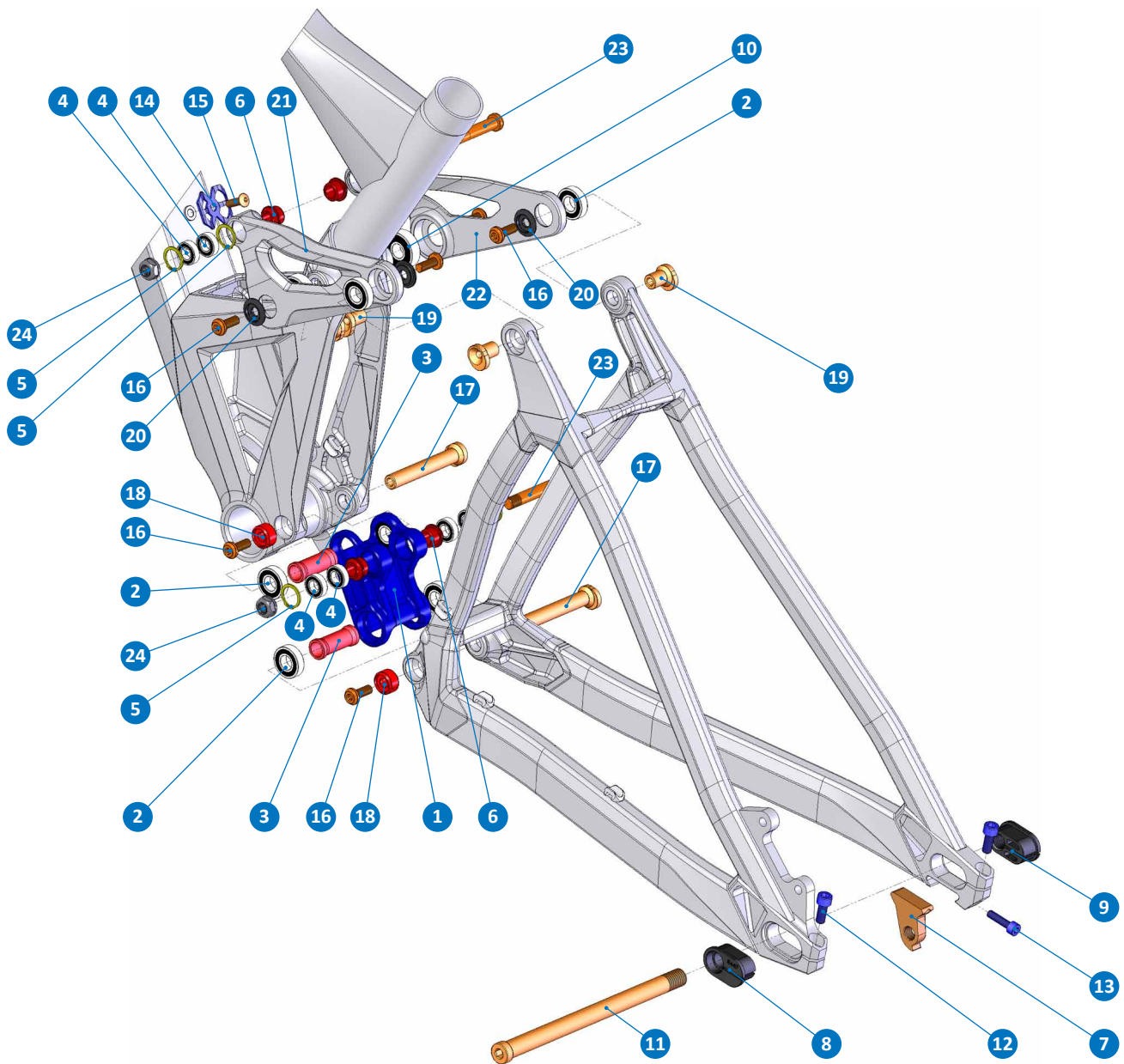


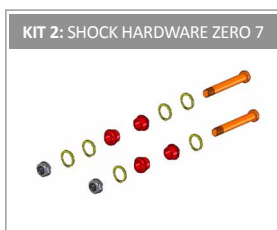
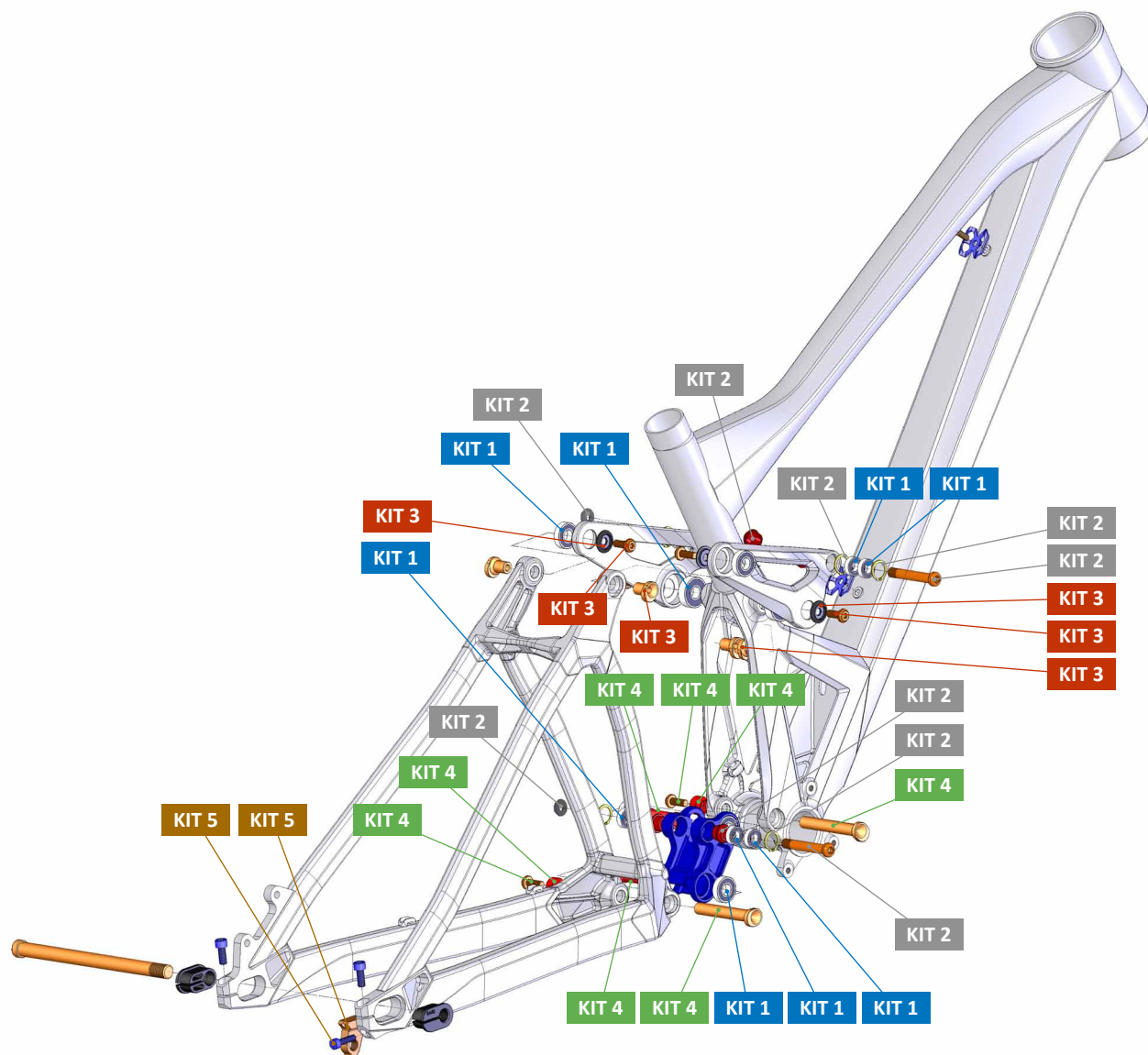
SUMMUM

YEAR: 2013



ITEM No.	DESCRIPTION	QTY.
1	LOWER LINK	1
2	BEARING 6900-RS	6
3	SPACER D14x35	2
4	BEARING 688-RS	8
5	O-RING	6
6	SHOCK SPACER	4
7	HANGER M051	1
8	RC 440mm ADAPTOR-L	1
9	RC 440mm ADAPTOR-R	1
10	BEARING 6000-2RS	2
11	HUB AXLE	1
12	M6x15L-P SCREW BOLT	2

ITEM No.	DESCRIPTION	QTY.
13	M5x20L-P SCREW BOLT	1
14	CABLE HOLDER	2
15	SCREW BOLT	2
16	M6X16 SCREW	6
17	PIVOT AXLE	2
18	LOCK WASHER	2
19	PIVOT AXLE	4
20	BEARING CAP	4
21	UPPER LINK LEFT	1
22	UPPER LINK RIGHT	1
23	SHOCK BOLT M8	2
24	BOLT NUT M8	2



PART NUMBER	DESCRIPTION	COMPONENTS
099.13103	KIT 1: ZERO BEARING KIT 7	BEARING 6900-RS (x6) / BEARING 6000-2RS (x2) / BEARING 688-RS (x8)
099.13104	KIT 2: SHOCK HARDWARE ZERO 7	O-RING (x6) / SHOCK SPACER (x4) / SHOCK BOLT M8 (x2) / BOLT NUT M8 (x2)
099.13105	KIT 3: UPPER LINK HARDWARE KIT 10	M6X16 SCREW (x4) / PIVOT AXLE (x4) / BEARING CAP (x4)
099.13106	KIT 4: LOWER LINK HARDWARE KIT 11	SPACER D14x35 (x2) / LOCK WASHER (x2) / M6X16 SCREW (x2) / PIVOT AXLE (x2)
099.13107	KIT 5: HANGER KIT 8	HANGER M051 (x1) / M5x20L-P SCREW BOLT (x1)